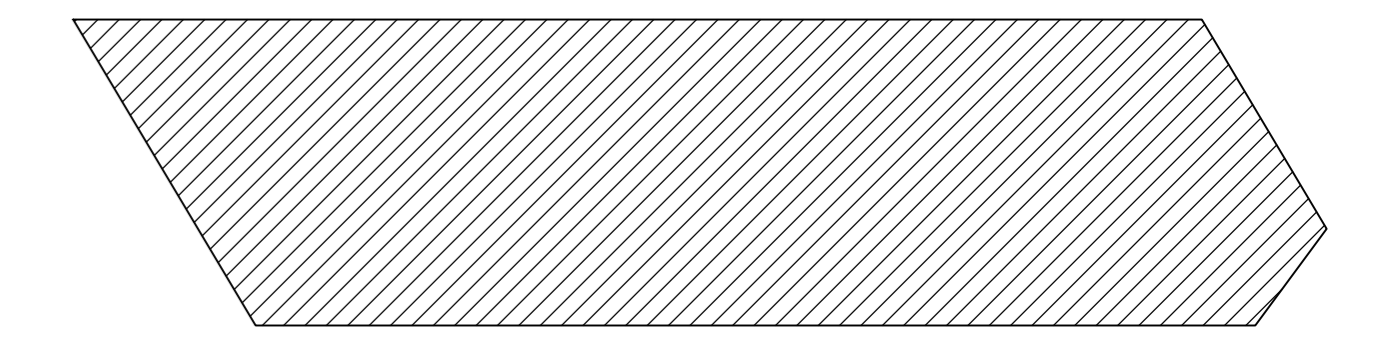
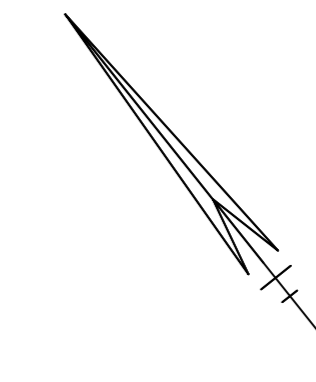
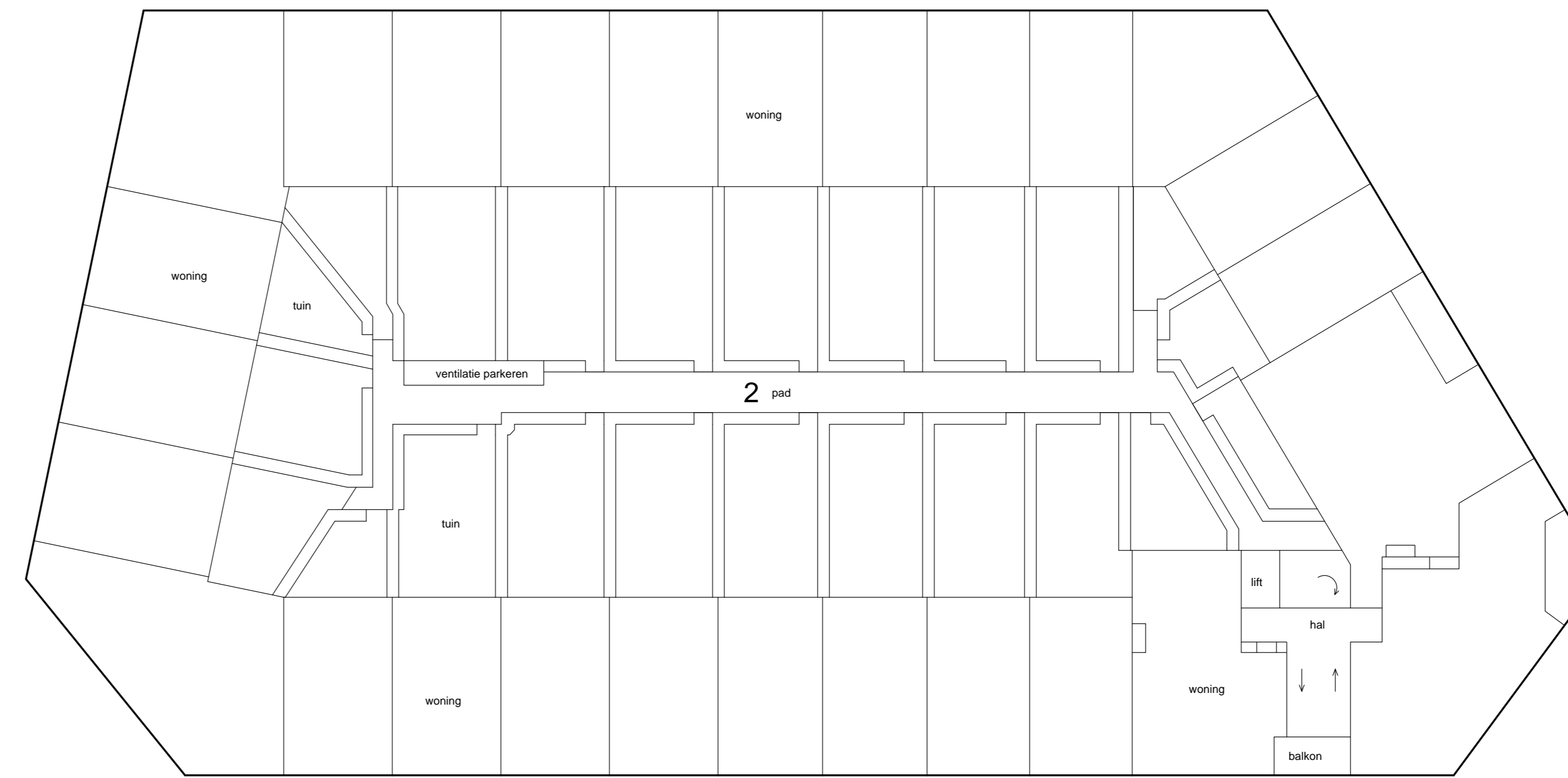
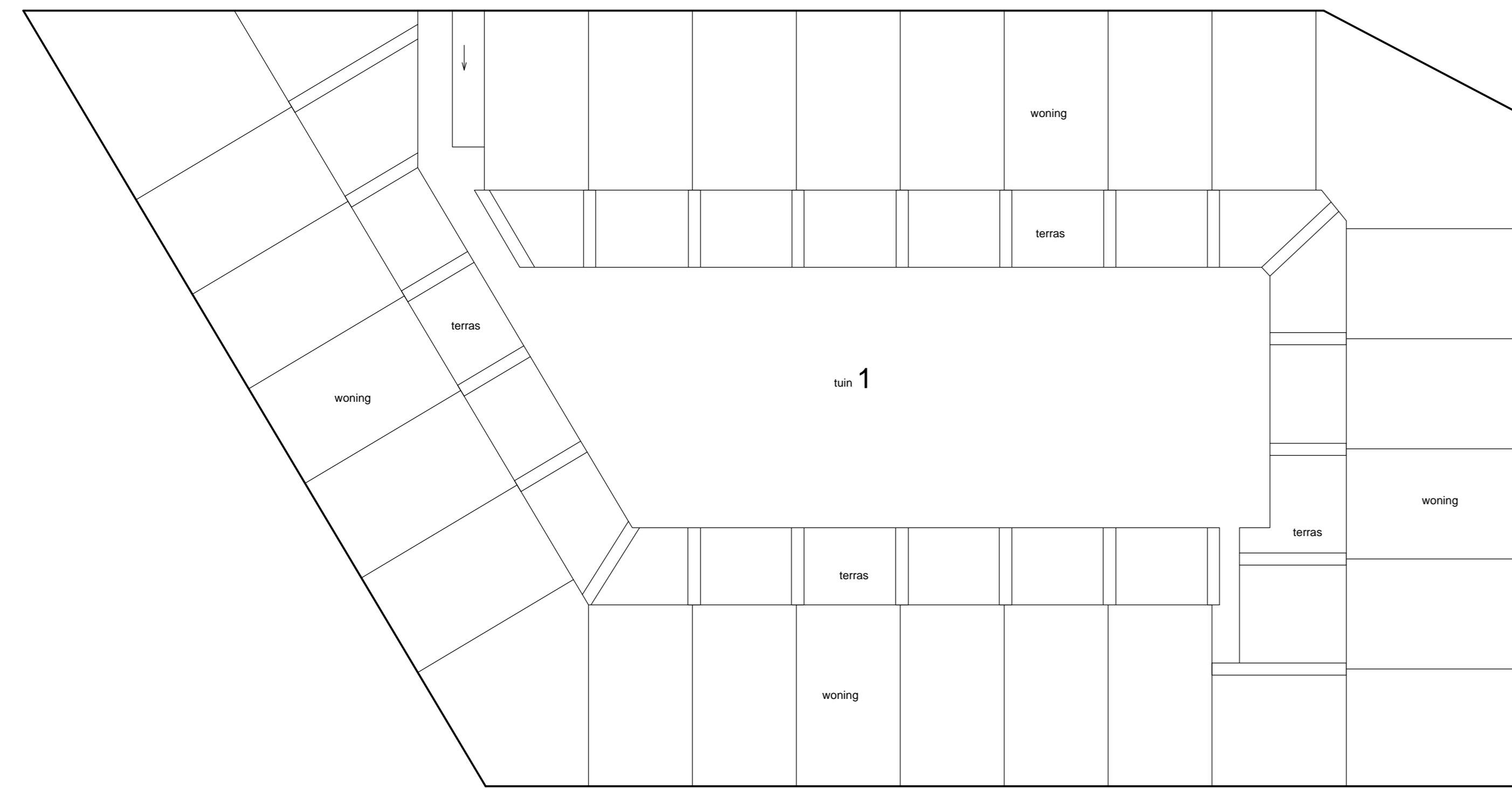


Voorgenomen splitsing in appartementsrechten van het kadastrale perceel:

Schaal 1 : 200  
□ = Gemeenschappelijk  
Tekening bestaat uit 3 bladen  
Blad 1



Situatie 1:1000

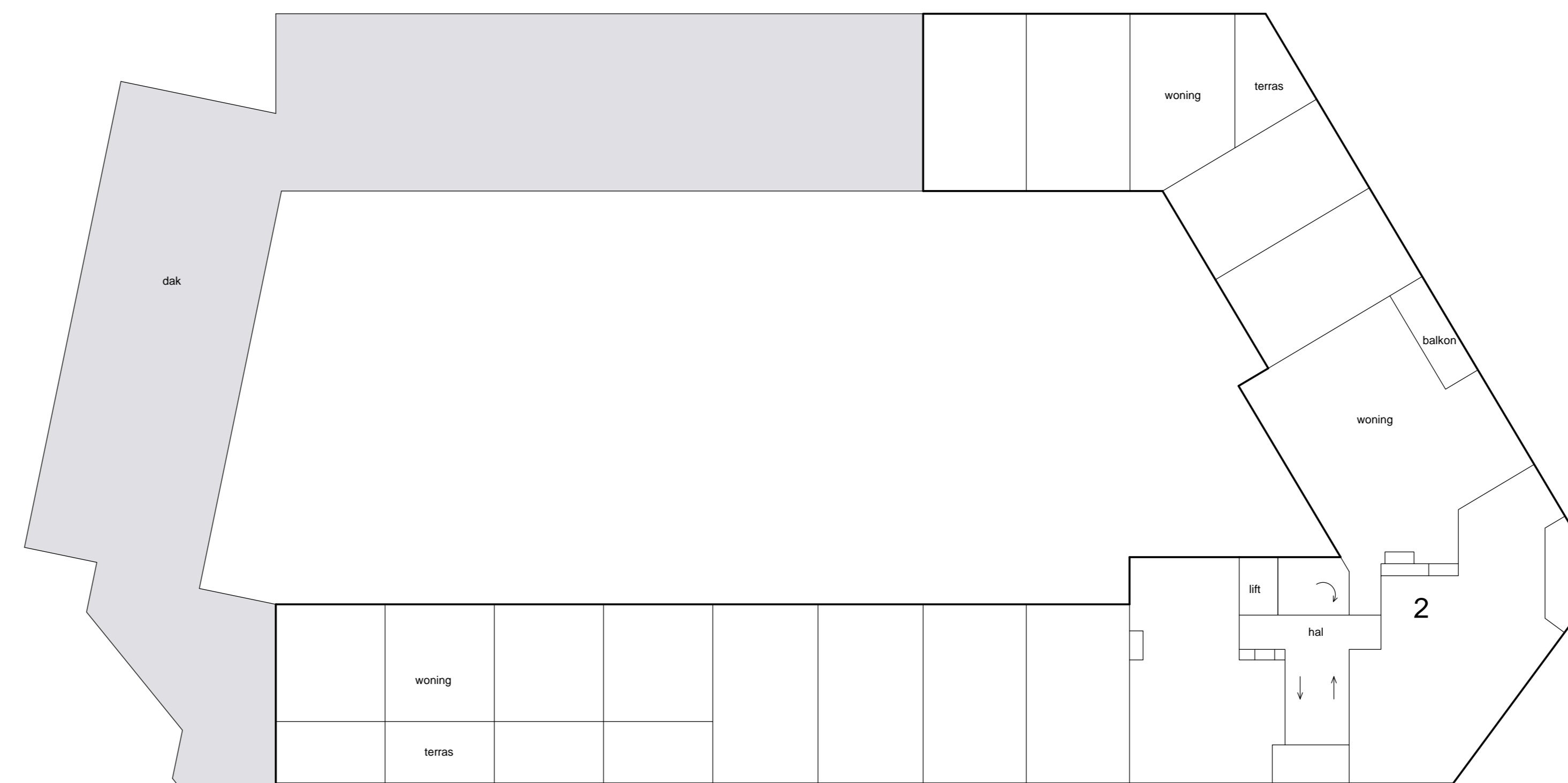
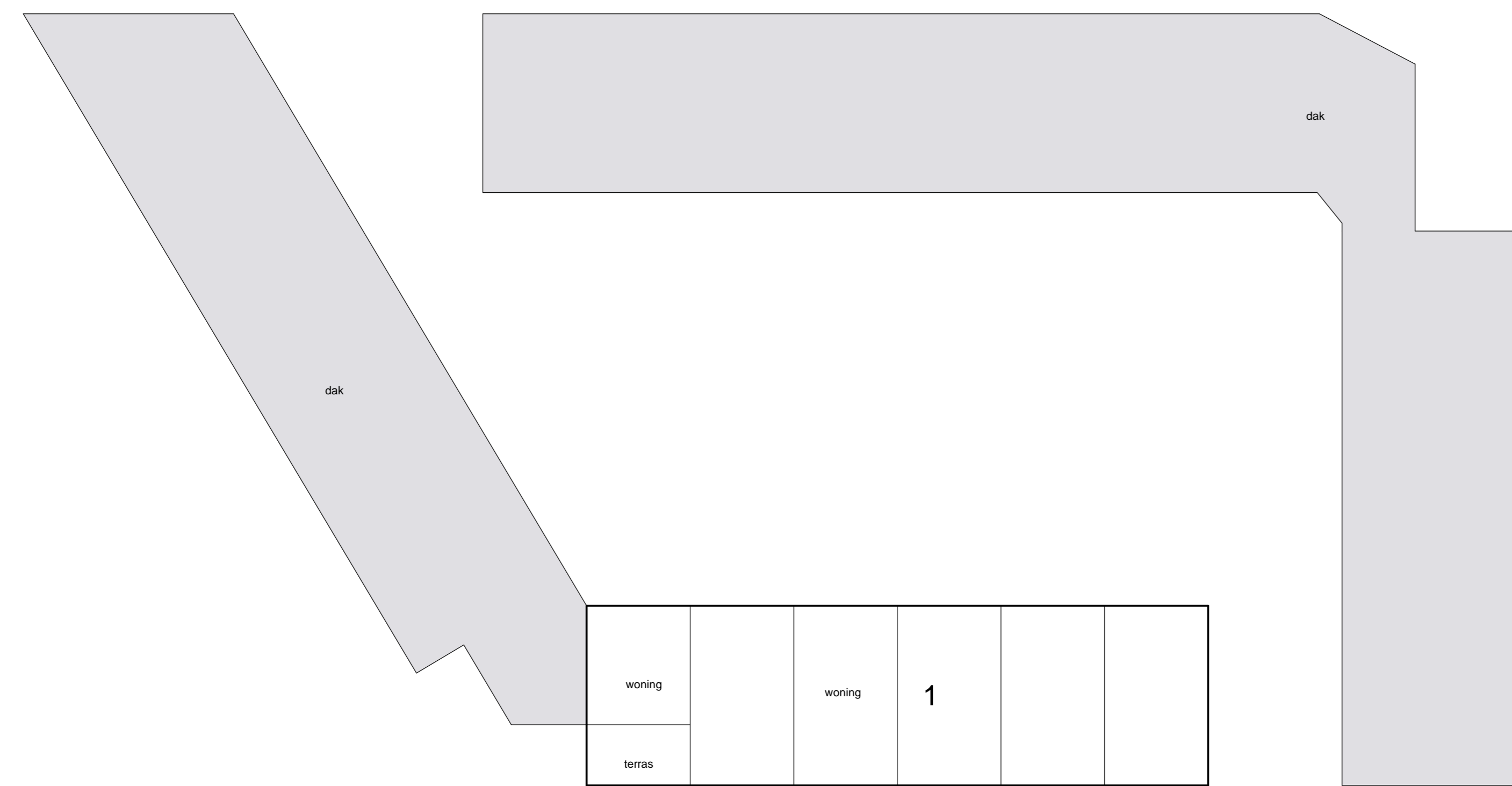
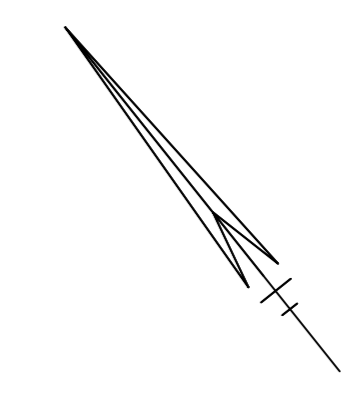
1e etage



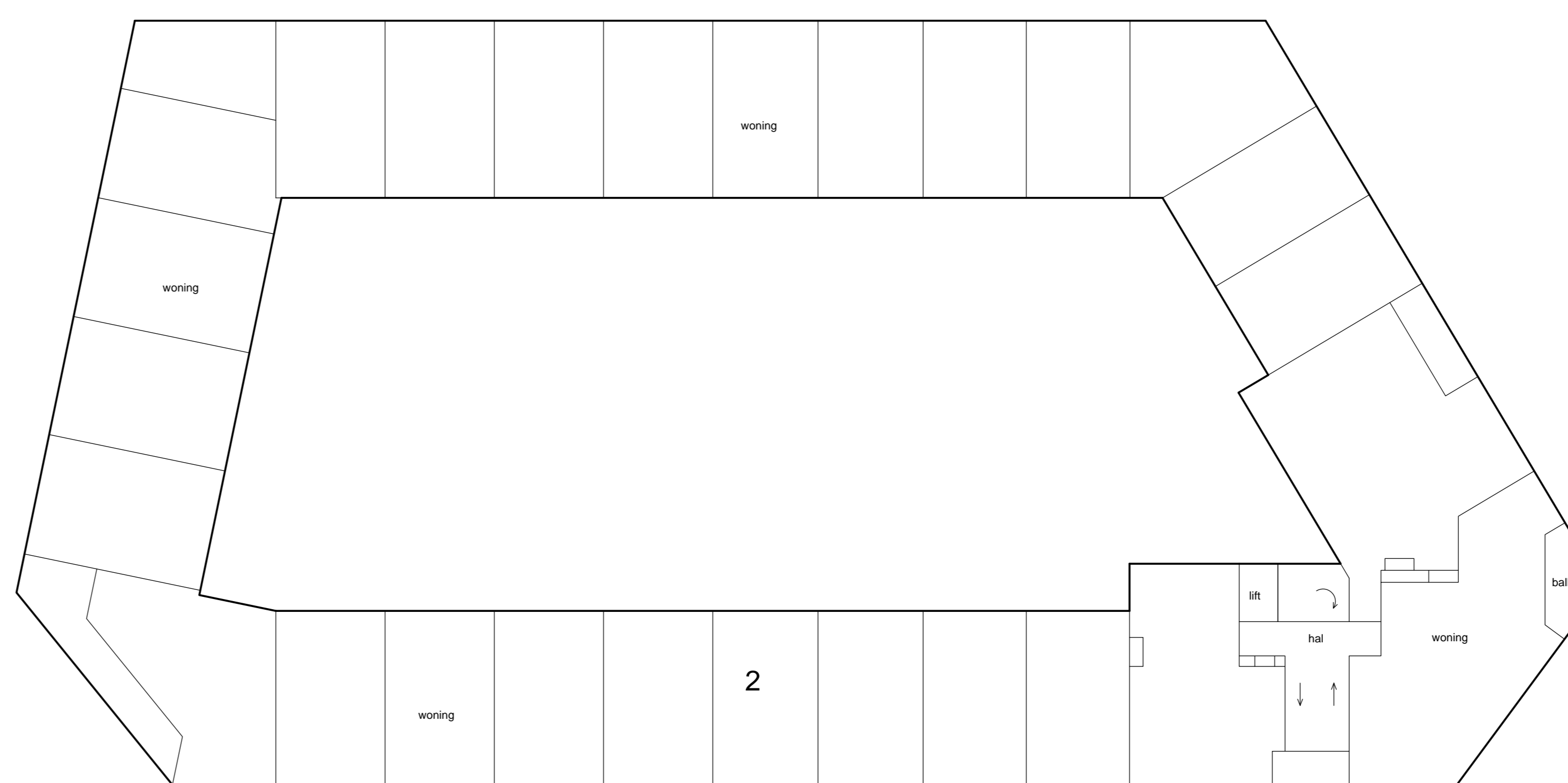
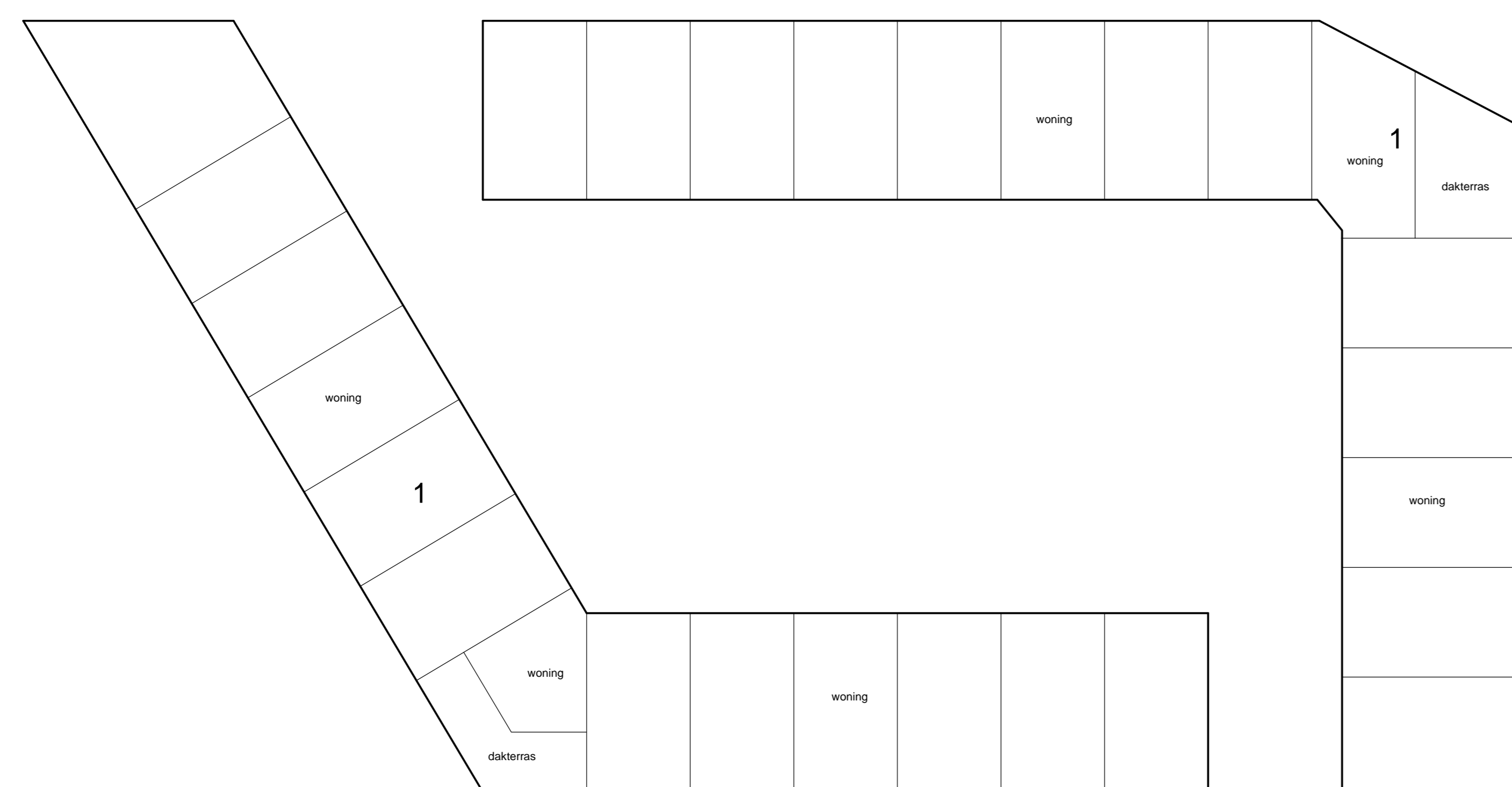
begane grond



Schaal 1 : 200  
□ = Gemeenschappelijk  
Tekening bestaat uit 3 bladen  
Blad 2



3e etage

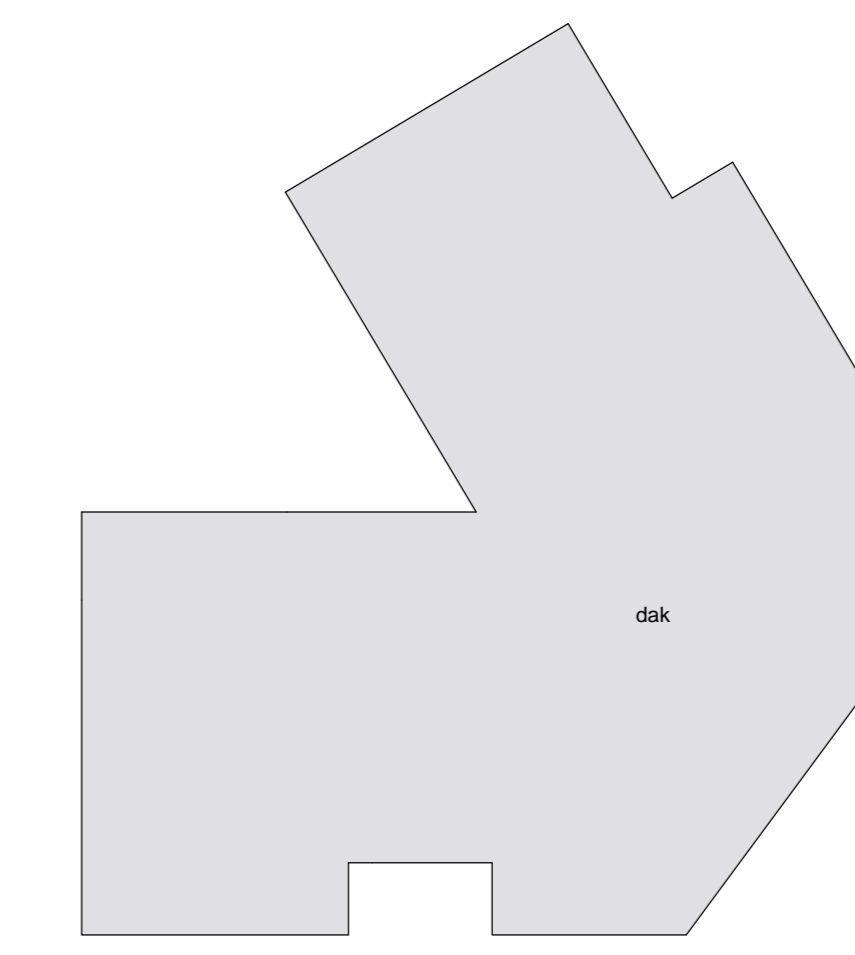
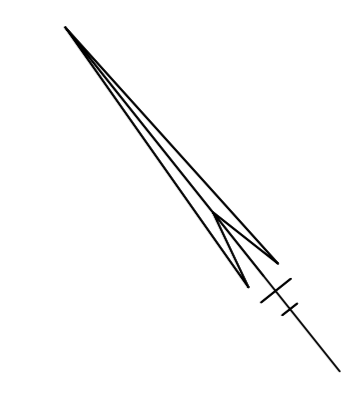


2e etage

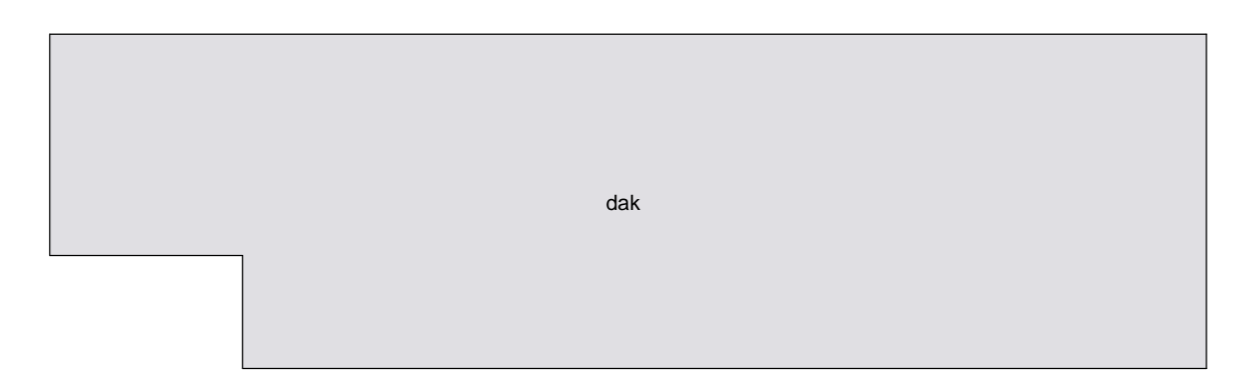
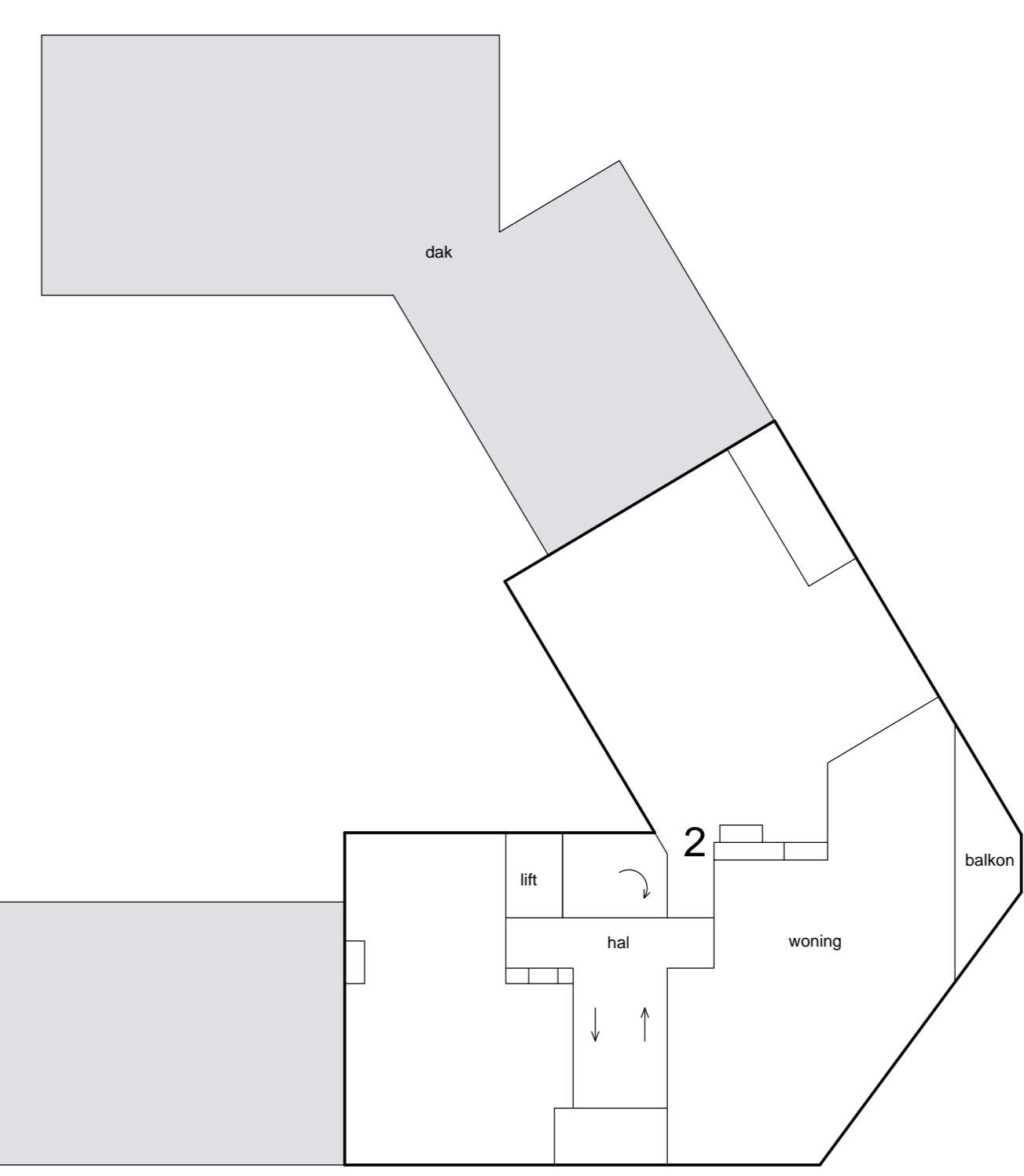


Voorgenomen splitsing in appartementsrechten van het kadastrale perceel:

Schaal 1 : 200  
□ = Gemeenschappelijk  
Tekening bestaat uit 3 bladen  
Blad 3



dak



4e etage

