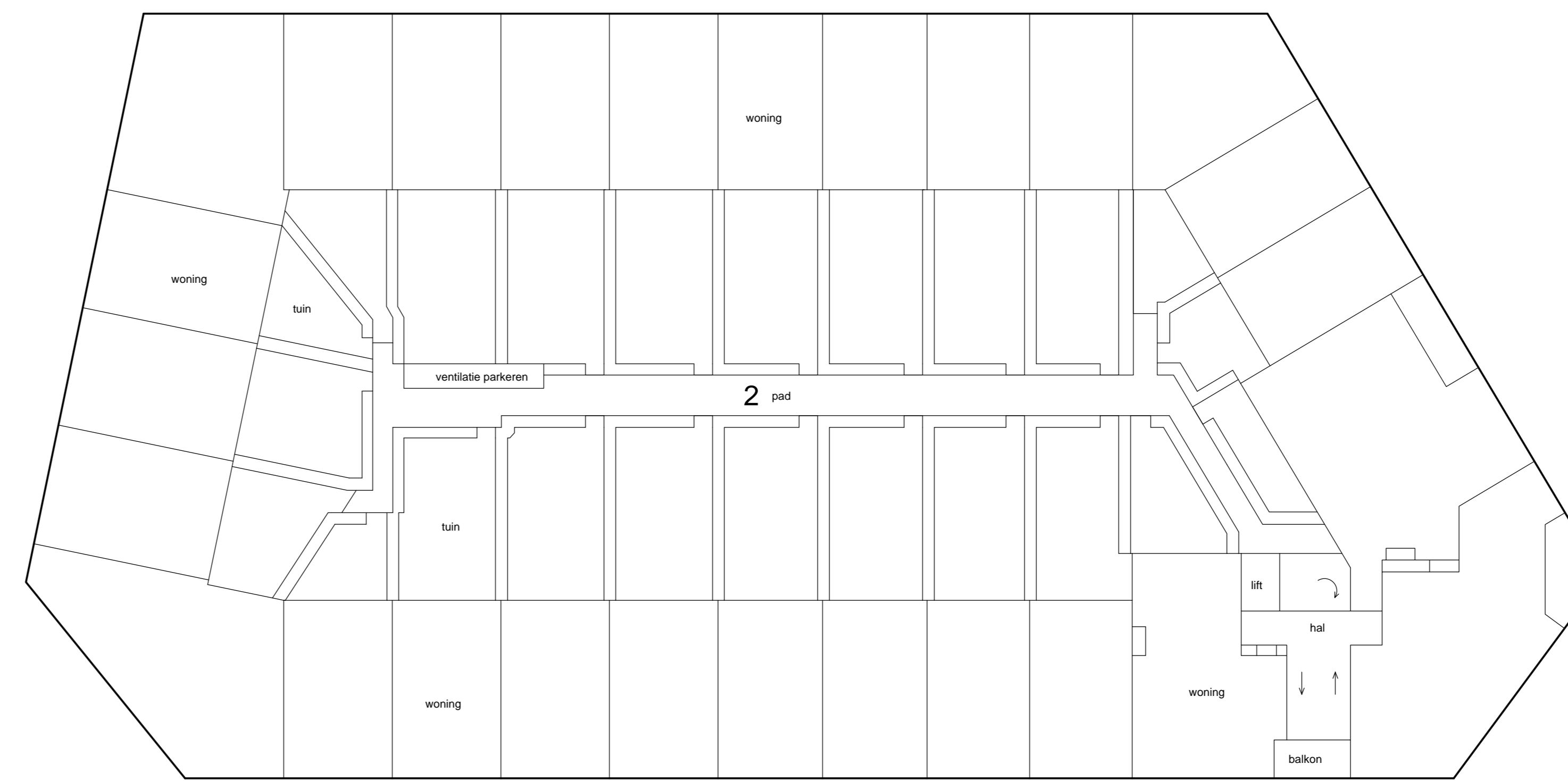
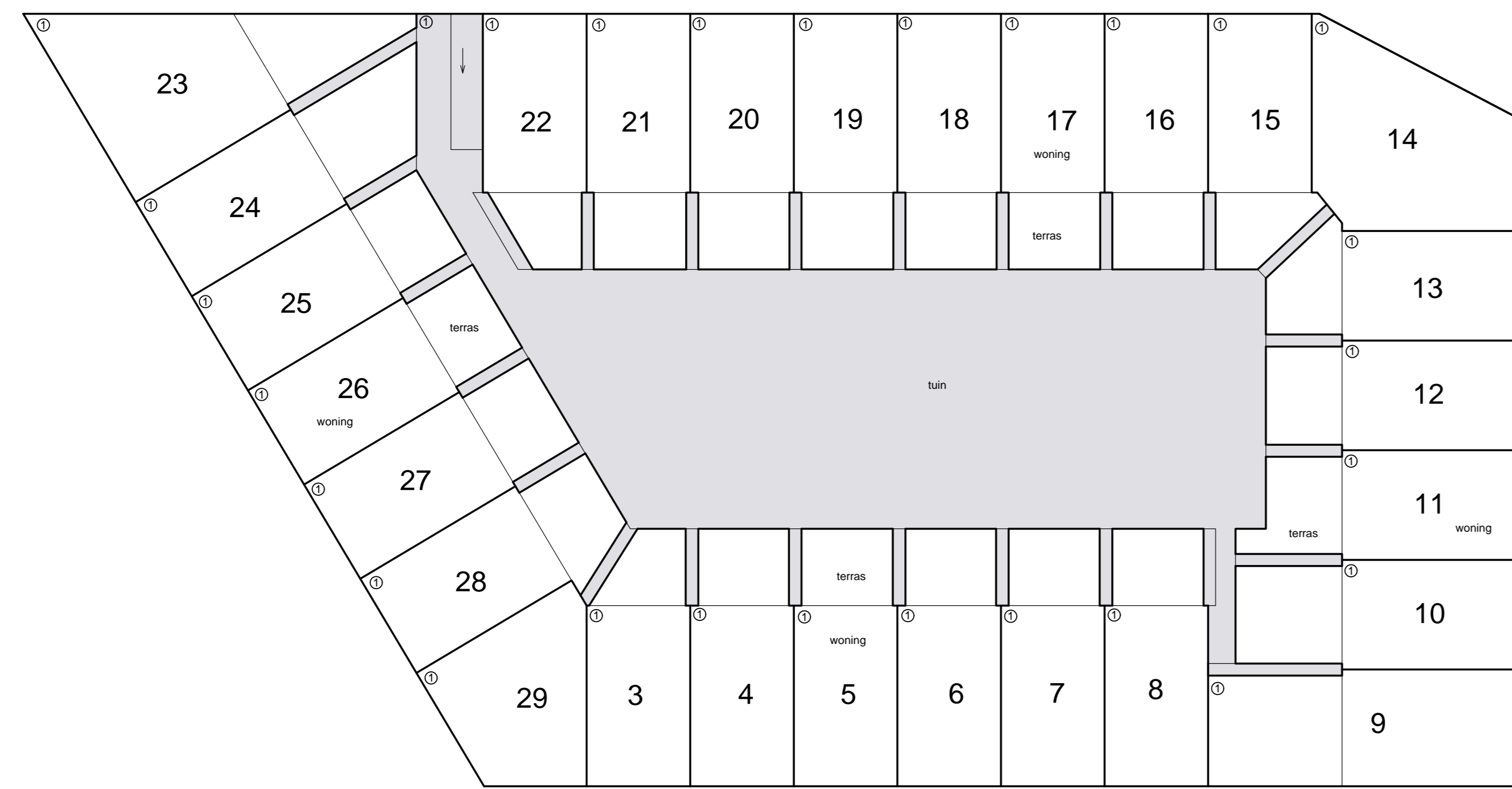


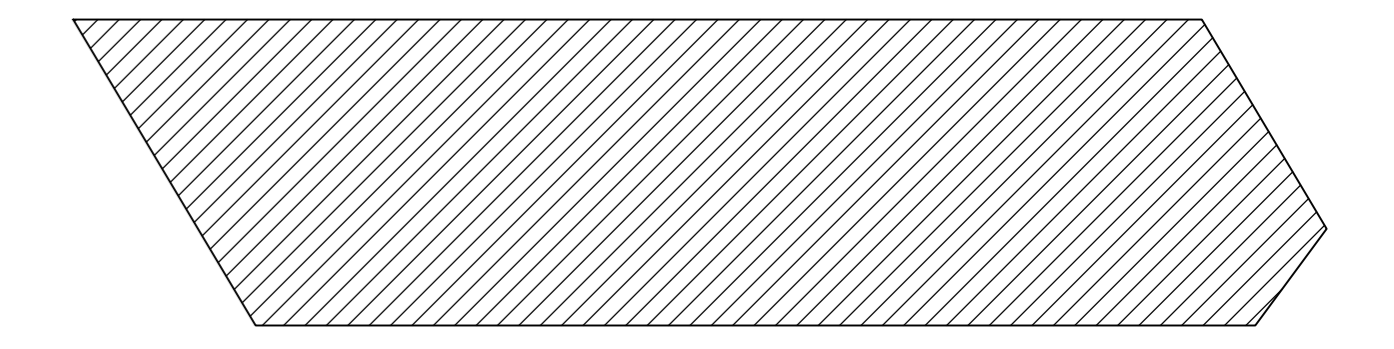
Schaal 1 : 200  
= Gemeenschappelijk  
Tekening bestaat uit 3 bladen  
Blad 1



1e etage



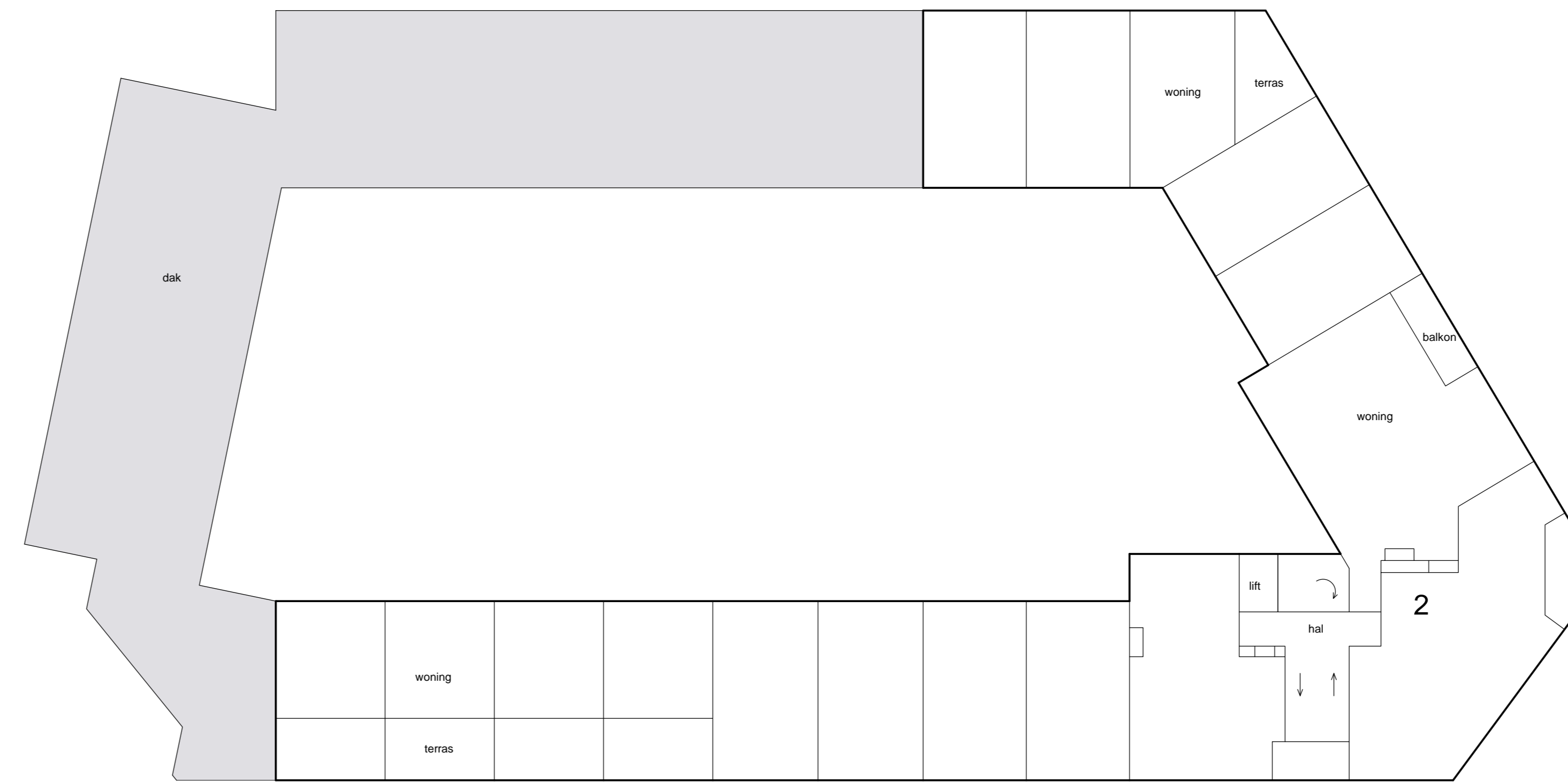
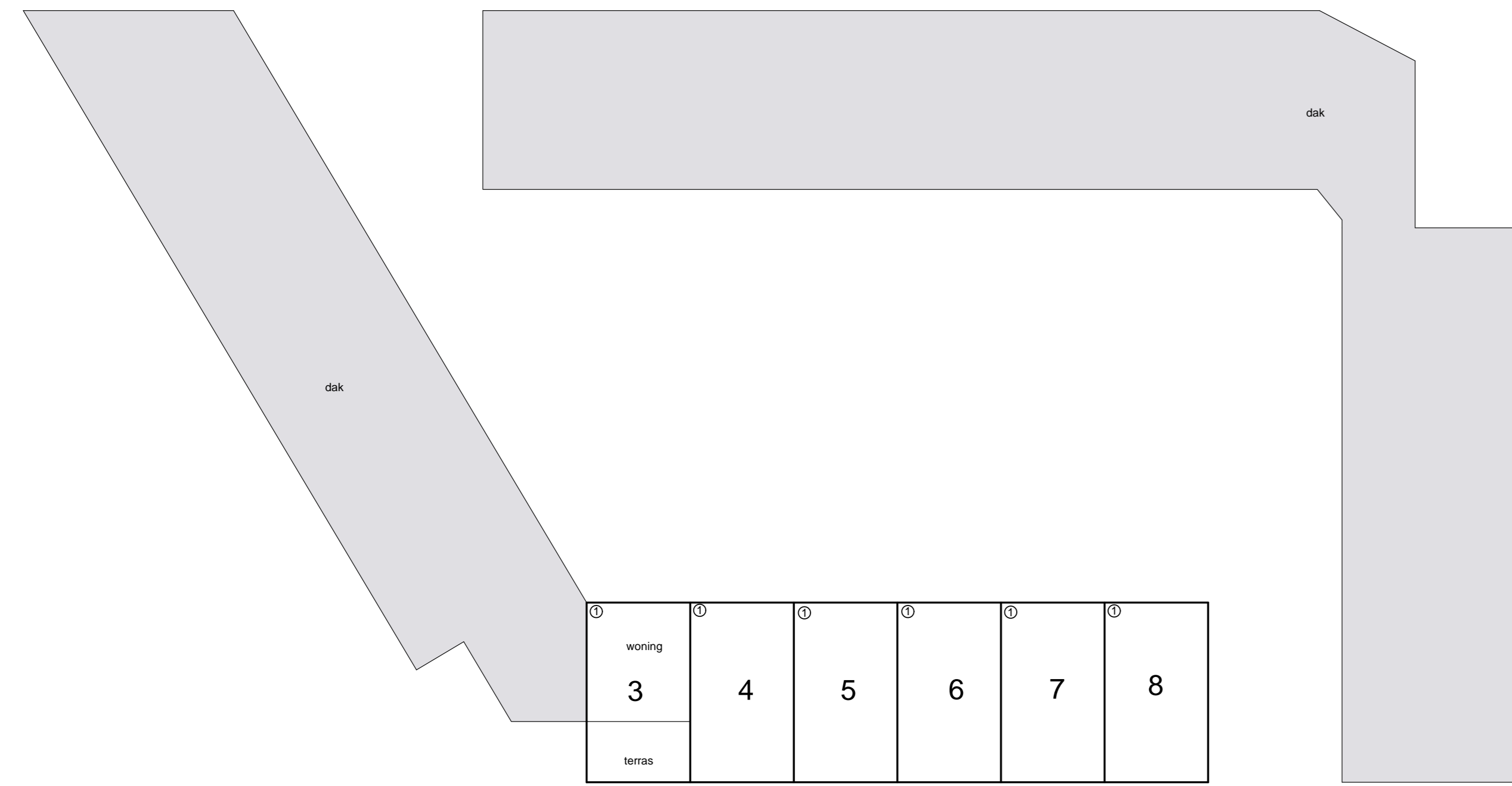
begane grond



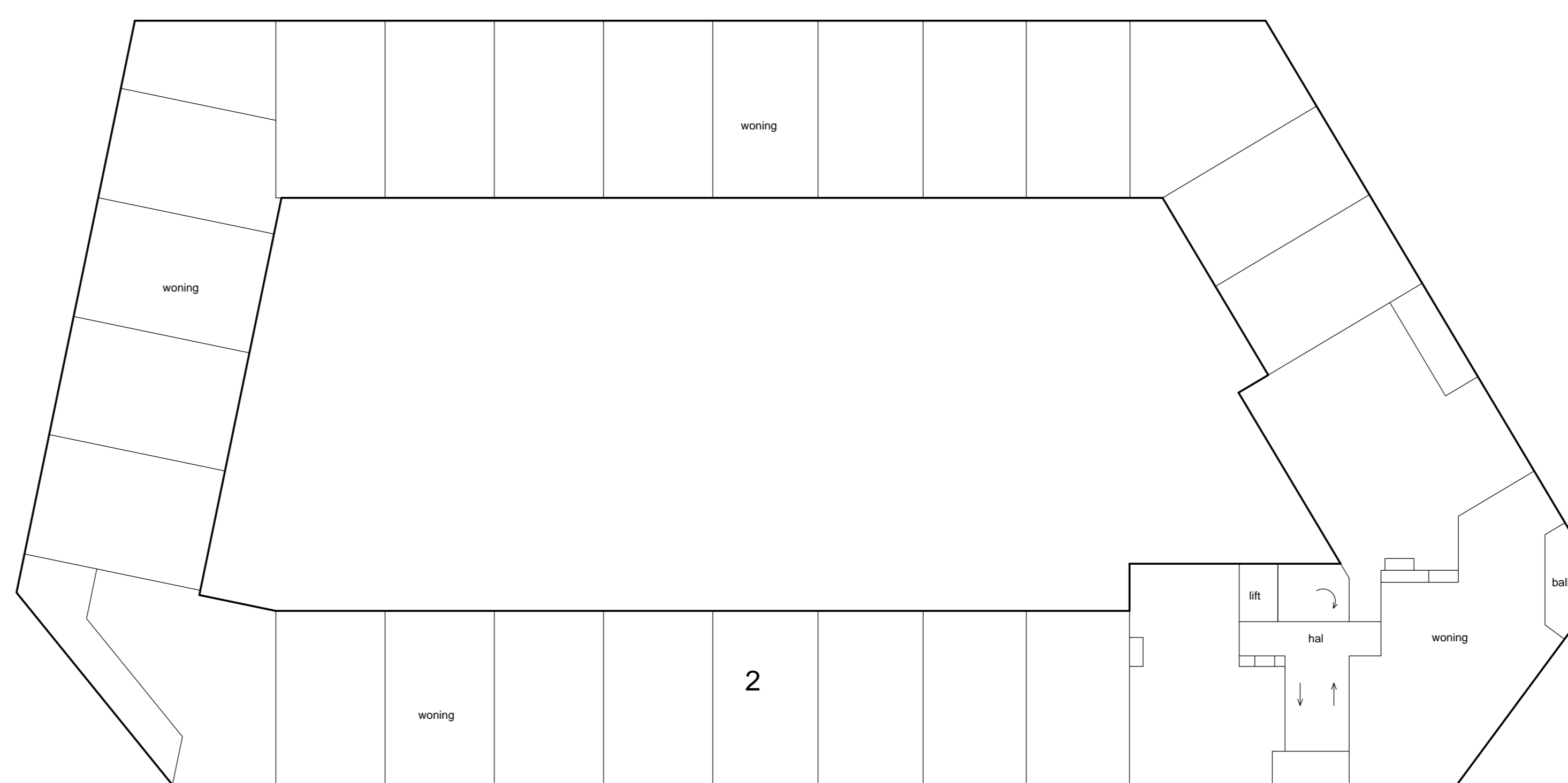
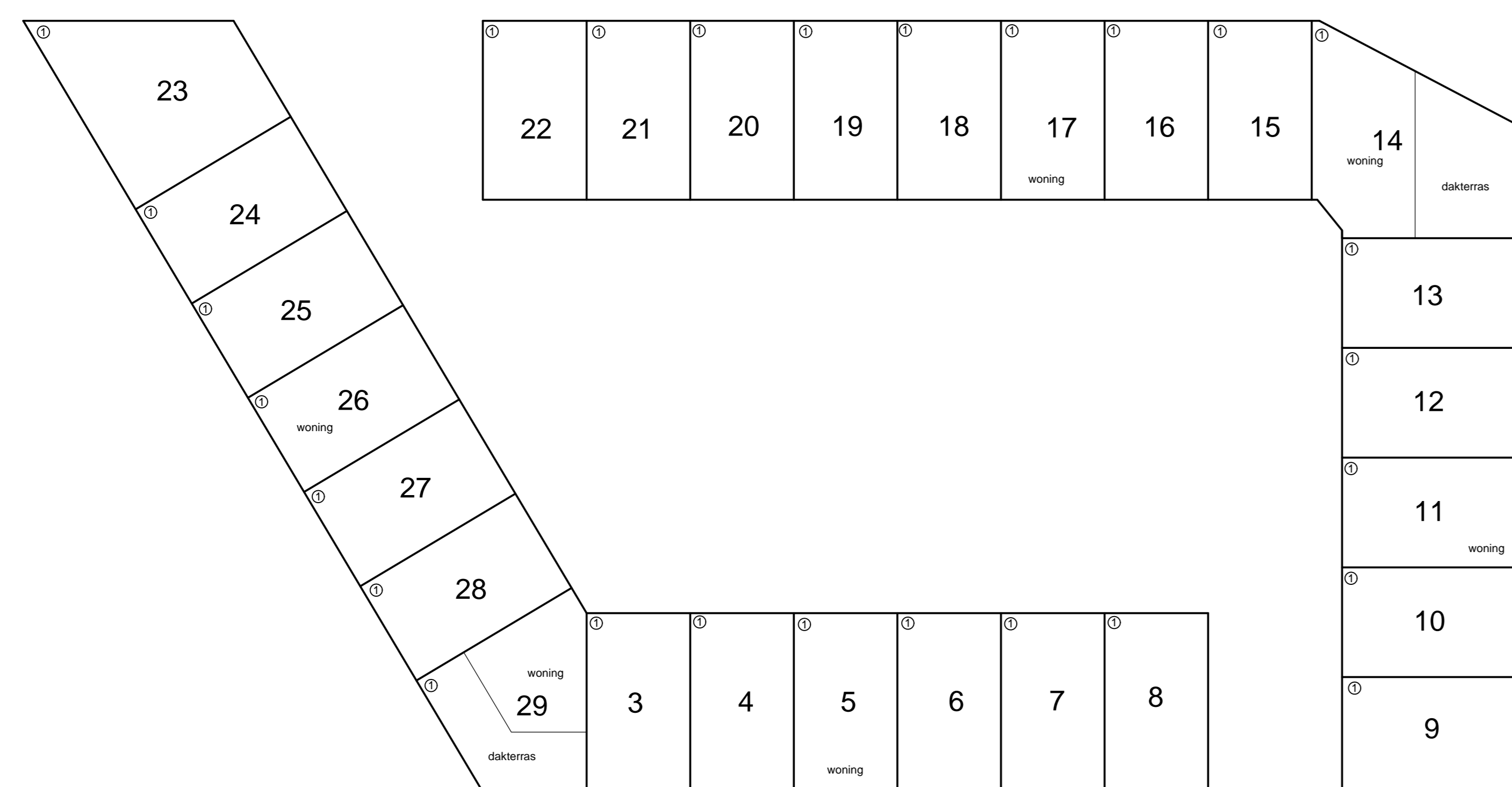
Situatie 1:1000



Schaal 1 : 200  
= Gemeenschappelijk  
Tekening bestaat uit 3 bladen  
Blad 2



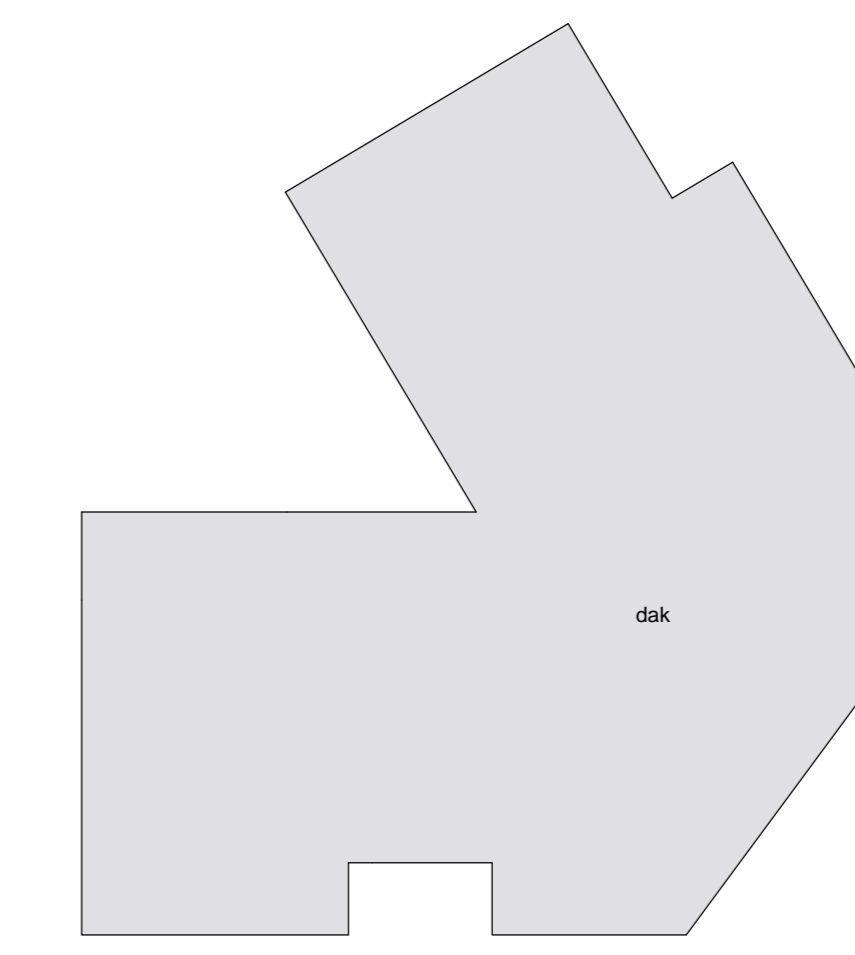
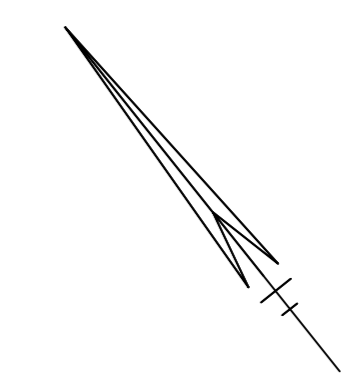
3e etage



2e etage



Schaal 1 : 200  
□ = Gemeenschappelijk  
Tekening bestaat uit 3 bladen  
Blad 3



dak



4e etage

